

HARDWOOD VENT INSTALLATION GUIDE

SURFACE MOUNT (INSERT) VENTS



PREFINISHED

- Attach a damper (optional).
- Remove the old metal register and insert the new hardwood vent into the duct opening.

UNFINISHED

- Finish (stain or varnish) all exposed surfaces (front, back, edges and between the louvers) before installing. For easier removal, finish the vent and floor separately.
- Attach a damper (optional).
- Remove the old metal register and insert the new hardwood vent into the duct opening.

FLUSH MOUNT WITH FRAME VENTS



PRIOR TO INSTALLATION

- If the flooring has already been installed, and the vent and frame do not fit into the duct opening, trace around the vent frame with a pencil. Place masking tape on the floor around the tracing. Cut a new opening into the flooring, but not into the subfloor.
- If the flooring has not been installed yet, install the vent frame as described below, then install the flooring.

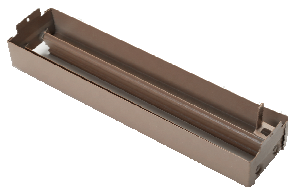
PREFINISHED

- Center the vent and frame over the duct opening in the floor.
- Glue and blind nail the frame to the subfloor and then install the flooring.
- Attach a damper (optional).
- When fitting the vent back into the frame, if the thickness needs to be adjusted, sand the BACK of the vent to level it with the floor and frame. Be sure to seal the sanded surface.

UNFINISHED

- Center the vent and frame over the duct opening in the floor.
- Glue and blind nail the frame to the subfloor and then install the flooring.
- Attach a damper (optional).
- When fitting the vent back into the frame, if the thickness needs to be adjusted, sand the BACK of the vent to level it with the floor and frame. When sanding the floor, DO NOT RUN THE WHEEL OF A SANDER OVER THE VENT FACE! This may break the louvers of the vent.
- Finish (stain or varnish) all exposed surfaces (front, back, edges and between the louvers) before installing. For easier removal, finish the vent and floor separately.


OPTIONAL DAMPERS



The adjustable box damper can be used on flush mount, surface mount and toe kick vents with standard size 2", 4" or 6" vents.



The easy slide damper is a fully adjustable damper that self attaches to guide rails on the flush mount and surface mount vents (standard sizes only; not available for 4" x 8" vents).

 **WARNING:** Drilling, sawing, sanding or machining wood products generates wood dust, a substance known to the State of California to cause cancer. Avoid inhaling wood dust or use a dust mask or other safeguards for personal protection. For more information go to www.P65Warnings.ca.gov/wood.

California 93120 Compliant for Formaldehyde