

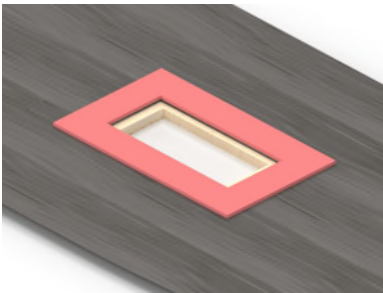
MULTILAYER FLOORING VENT INSTALLATION GUIDE

SUPPLIED BY SENECA

- MLF Vent (fabricated from customer supplied material)
- MDF Template (also sold separately)
- Steel Damper
- Two 8D Nails (for use as travel stops)
- Double Sided Tape (4 pieces)

CONTRACTOR TOOLS NEEDED

- Square
 - Tape Measure
 - Multi-tool
 - Marking Pen
 - Hammer
 - Utility Knife or Chisel
- RECOMMENDED:** Wearing ear and eye protection during installation, along with using a dust mask.

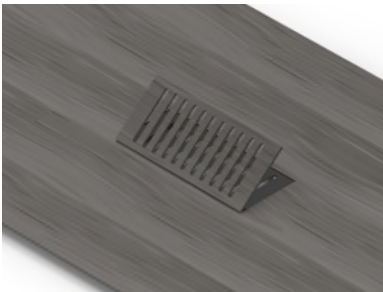


STEP 1

Center the template over the pre-marked existing duct opening. Fasten in place with the four pieces of double sided tape.

STEP 2

Use a multi-tool to correctly cut and shape the opening of the vinyl flooring to fit the vent. Use a corner chisel or utility knife to square off the inside corners if necessary.



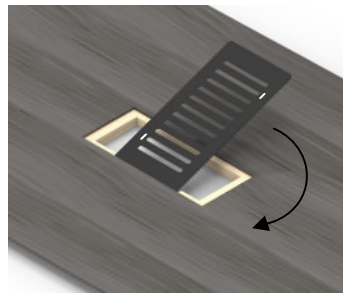
STEP 4

Insert the vent into the opening to verify the slots in the damper are lined up fully open with both the damper and vent. Remove the vent and hammer in the two 8D nails into the short slots until they are flush with the top of the damper. Slide the damper back and forth to ensure you have full range of motion lengthwise along the slot.

STEP 5

Reinsert vent back into the opening to complete installation.

TO OPERATE: To adjust air flow, remove the vent and slide the steel damper until the metal slats either partially or fully close off the slots of the vent.

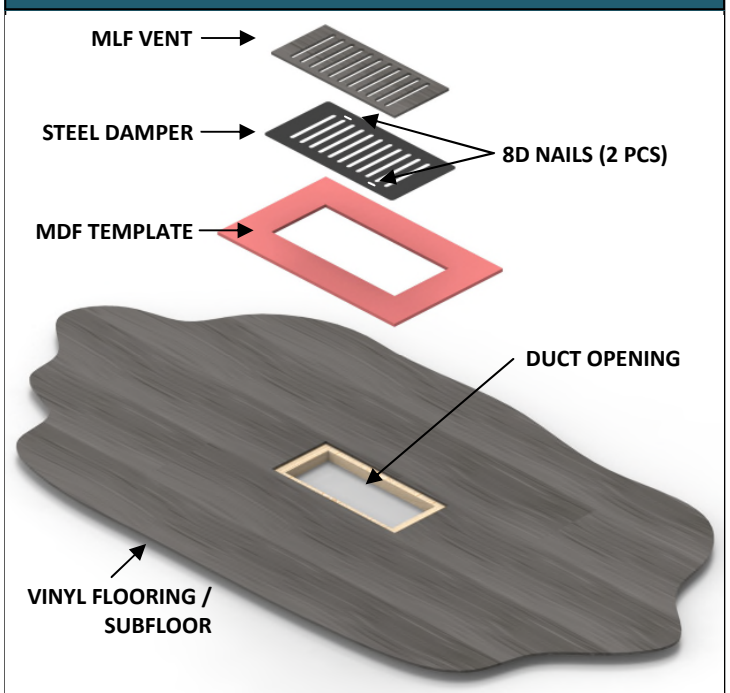


STEP 3

Remove the template and thoroughly clean the vent opening area. Use a utility knife or chisel to remove any fraying or small burrs on the edge of the flooring.

Install the damper underneath the flooring and on top of the subfloor. Rotate it underneath the flooring and then center the damper over the duct opening to ensure maximum air flow.

MLF VENT OVERVIEW



WARNING: Drilling, sawing, sanding or machining wood products generates wood dust, a substance known to the State of California to cause cancer. Avoid inhaling wood dust or use a dust mask or other safeguards for personal protection. For more information go to www.P65Warnings.ca.gov/wood.