

HARDWOOD & MULTILAYER FLOORING VENTS

HARDWOOD VENTS

Seneca Millwork is now offering hardwood vents to complement our transitions. The vents are available in Birch, Brazilian Cherry, Hickory, Maple, Red Oak, Walnut and White Oak. Natural color variations in raw material will dictate the final shade of the stain. Unfinished vents are shipped sanded and clean, ready for on-site finishing. Prefinished vents are color-blended to your flooring specifications and are shipped ready to be installed. For custom order vents, including additional sizes or other vent styles, please contact customer service.



FLUSH MOUNT VENT WITH FRAME

The flush mount vent and frame set flat on the subfloor and work well in high traffic areas. The frame is permanently installed while the vent is removable for cleaning purposes. Standard flush mount vents with frames are 3/4" thick, but are also available in a variety of thicknesses including 3/8", 1/2", 9/16" or 5/8". Standard size vents can be used with the adjustable box damper or easy slide damper. For a flush mount vent without the frame, contact customer service for more information. Standard sizes are:

ORDER SIZE (DUCT OPENING)	OVERALL DIMENSIONS
2-1/2" x 10"	5" x 11-13/16"
2-1/2" x 12"	5" x 14-1/8"
2-1/2" x 14"	5" x 16"

ORDER SIZE (DUCT OPENING)	OVERALL DIMENSIONS
4" x 8"	6-3/4" x 10-1/4"
4" x 10"	6-3/4" x 12-1/4"
4" x 12"	6-3/4" x 14-1/2"
4" x 14"	6-3/4" x 16-1/2"

ORDER SIZE (DUCT OPENING)	OVERALL DIMENSIONS
6" x 10"	9" x 12-1/4"
6" x 12"	9" x 14-1/2"
6" x 14"	9" x 16-1/2"



SURFACE MOUNT VENT

Surface mount vents are 3/4" thick and designed with a smooth beveled edge to conceal rough edges in the surface material. Standard size vents can be used with the adjustable box damper or easy slide damper. Standard sizes are:

ORDER SIZE (DUCT OPENING)	OVERALL DIMENSIONS
2-1/2" x 10"	3-15/16" x 11-7/16"
2-1/2" x 12"	3-15/16" x 13-7/16"
2-1/2" x 14"	3-15/16" x 15-7/16"

ORDER SIZE (DUCT OPENING)	OVERALL DIMENSIONS
4" x 8"	5-7/16" x 9-7/16"
4" x 10"	5-7/16" x 11-7/16"
4" x 12"	5-7/16" x 13-7/16"
4" x 14"	5-7/16" x 15-7/16"

ORDER SIZE (DUCT OPENING)	OVERALL DIMENSIONS
6" x 10"	7-7/16" x 11-7/16"
6" x 12"	7-7/16" x 13-7/16"
6" x 14"	7-7/16" x 15-7/16"



BASE VENT

This solid hardwood vent is designed to cover duct openings near baseboard, replacing unsightly metal registers. The angled face of the base vent covers the entire vent opening leaving only beautiful hardwood showing. Use the overall dimensions to determine the required size to cover the opening and allow 3/4" clearance around all sides of the duct opening. An adjustable base vent damper is available for standard sizes and special orders. Standard sizes are:

ORDER SIZE (DUCT OPENING)	OVERALL DIMENSIONS
15"	15" x 5" x 3-1/4"
18"	18" x 5" x 3-1/4"



COLD AIR RETURN—WALL APPLICATION

The louvers of the cold air return vent will conceal a duct opening and can be one-way or bidirectional. Installation choices can be at the base of walls or raised higher depending on duct opening placement. Standard sizes are:

ORDER SIZE (DUCT OPENING)	OVERALL DIMENSIONS
14" x 8"	16" x 10"
30" x 8"	32" x 10"



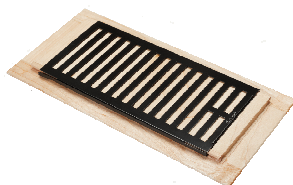
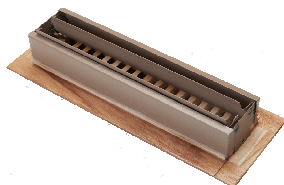
TOE KICK VENT

This solid wood toe kick vent is designed to be installed under cabinets or a vanity. Each toe kick kit includes one vent with predrilled holes and mounting screws. An adjustable box damper is available for standard sizes. Standard sizes are:

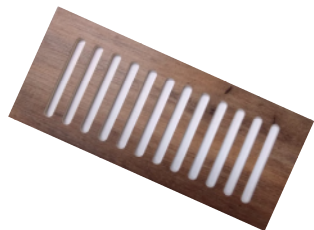
ORDER SIZE (DUCT OPENING)	OVERALL DIMENSIONS
2-1/4" x 12"	3" x 14"
2-1/4" x 14"	3" x 16"

DAMPERS FOR HARDWOOD VENTS

Dampers are metal and available in three styles. The **adjustable box damper** can be used on flush mount, surface mount and toe kick vents with standard size 2", 4" or 6" vents. The **easy slide damper** is a fully adjustable damper that self attaches to guide rails on the flush mount and surface mount vents (standard sizes only; not available for 4" x 8" vents). The adjustable **base vent damper** is available for standard size base vents.



MULTILAYER FLOORING VENTS



This multilayer flooring vent kit is designed for LVT, SPC and WPC composite flooring. It is waterproof, durable and the damper has a 300 lb load capacity. The kit includes a vent, damper, template, nails and double-sided tape. Flooring must be submitted to manufacture the vent. Contact customer service for more information. Standard sizes are:

ORDER SIZE (DUCT OPENING)	OVERALL DIMENSIONS
4" x 10"	5-1/2" x 11"
4" x 12"	5-1/2" x 13"

SENECA 
Perfect Fit. Perfect Finish.

Seneca Millwork, Inc.

300 Court Place ■ PO Box 429 ■ Fostoria, OH 44830

800.228.6671 ■ 419.435.6671 ■ fax 419.435.5688 ■ sales@senecamillwork.com

senecamillwork.com